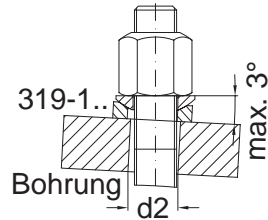
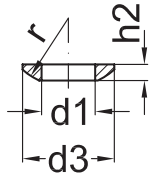


Scheiben

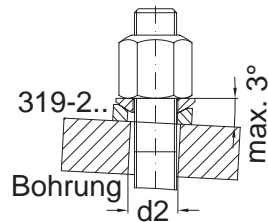
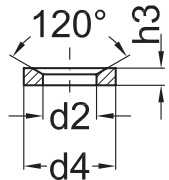
Produktklasse A nach DIN ISO 4759 Teil 1

Kugelscheiben DIN 6319 Form C einsatzgehärtet, Härte 550 + 100 HV10



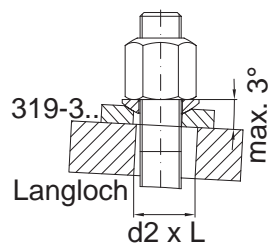
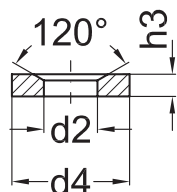
d	Best.-Nr.	d1	d3	h2	r
M06	319-106	6,4	12	2,3	9
M08	319-108	8,4	17	3,2	12
M10	319-110	10,5	21	4,0	15
M12	319-112	13,0	24	4,6	17
M14	319-114	15,0	28	5,0	22
M16	319-116	17,0	30	5,3	22
M20	319-120	21,0	36	6,3	27
M24	319-124	25,0	44	8,2	32
M30	319-130	31,0	56	11,2	41

Kegelpfannen DIN 6319 Form D einsatzgehärtet, Härte 550 + 100 HV10



d	Best.-Nr.	d2	d4	h3
M06	319-206	7,1	12	2,8
M08	319-208	9,6	17	3,5
M10	319-210	12,0	21	4,2
M12	319-212	14,2	24	5,0
M14	319-214	16,5	28	5,6
M16	319-216	19,0	30	6,2
M20	319-220	23,2	36	7,5
M24	319-224	28,0	44	9,5
M30	319-230	35,0	56	12,0

Kegelpfannen DIN 6319 Form G vergütet, Härte 350 + 80 HV30



d	Best.-Nr.	d2	d4	h3
M06	319-306	7,1	17	4,0
M08	319-308	9,6	24	5,0
M10	319-310	12,0	30	5,0
M12	319-312	14,2	36	6,0
M14	319-314	16,5	40	6,0
M16	319-316	19,0	44	7,0
M20	319-320	23,2	50	8,0
M24	319-324	28,0	60	10,0
M30	319-330	35,0	68	12,0